

# KAPTIV-MD

## Electronic zero air loss condensate drain

### PRODUCT FEATURES

The KAPTIV-MD is a zero air-loss drain designed for smaller compressed air applications.

The KAPTIV-MD incorporates the reliable JORC direct acting valve assembly with FPM seals, offering a pressure range of 0 to 16 bar (up to 230 PSI).

The solid and robust aluminium housing design has also been incorporated in to this model, following suite with the larger KAPTIV models.

With an inlet connection height of only 74mm this is an incredibly compact solution with unrivaled installation versatility and reliability.

The weight of the KAPTIV-MD is only 0.5 kg!

The maximum compressor capacity of this drain is 10 m<sup>3</sup>/min (350 CFM) and typical draining applications include fridge dryers and filters - mainly due to its incredible compact size.

### COMMERCIAL BENEFITS

- Extremely compact and lightweight unit
- True zero air-loss solution
- One model covers all compressor capacities up to 10 m<sup>3</sup>/min.
- No sizing chart required, offering stocking advantages
- The serviceable valve offers maintenance opportunities
- Personal branding opportunities

### TECHNICAL ADVANTAGES

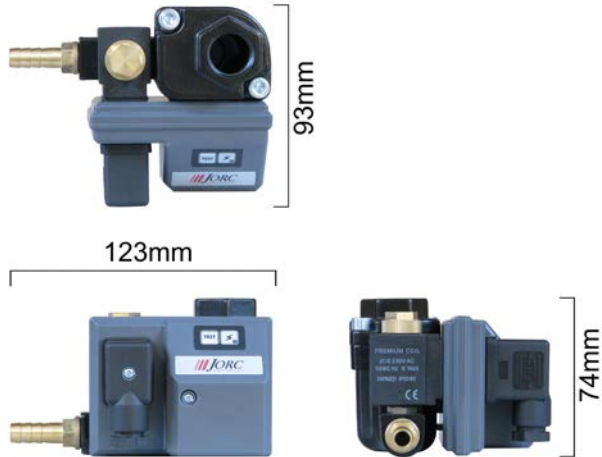
- Zero air-loss during the condensate discharge
- Easy to install due to its low inlet height
- External valve position allows for fast and easy maintenance
- Direct acting valve with FPM seal
- Robust corrosion resistant aluminium housing
- A large integrated mesh strainer
- Incorporating a smart-self-cleaning valve modus



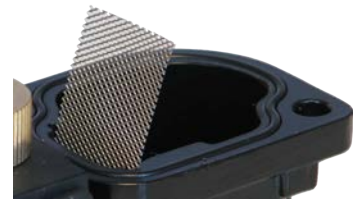
# KAPTIV-MD

Electronic zero air loss condensate drain

## DIMENSIONS



Incredibly compact!



Integrated mesh filter

## TECHNICAL SPECIFICATIONS

Max. compressor capacity	10 m <sup>3</sup> /min.
Max. drainage capacity	45 liters condensate per hour at 16 bar
Pressure range	0 - 16 bar
Valve type	2/2 way, direct acting
Valve orifice	2 mm
Valve seals	FPM
Inlet connection	1/2" BSP or NPT
Inlet height	7.4 cm
Outlet connection	1/4" BSP
Medium temperature	1 - 50 °C
Ambient temperature	1 - 50 °C
Supply voltage options	230VAC / 115VAC / 24VAC / 24VDC
Power connector	DIN 43650-B
Serviceable valve	Yes
TEST feature	Yes
Environmental protection	IP65 (NEMA4)
Integrated mesh strainer	Yes
Housing material	Corrosion resistant aluminium, EP coating



JORC's direct acting valve assembly, offering you reliability

## JORC is NEN - EN - ISO 9001:2015 certified

Information provided herewith is believed to be accurate and reliable. However, no responsibility is assumed for its use or for any infringement of patents or rights of others, which may result from its use. In addition, JORC reserves the right to revise information without notice and without incurring any obligation.

**JORC Industrial BV**  
 Pretoriastraat 28  
 NL-6413 NN Heerlen  
 The Netherlands

Tel +31 45 5242427

info@jorc.nl  
 www.jorc.eu

